

LED Area Light XAL Series

Project:	
Catalog#:	
Approved by:	

Features

- LED: Lumileds
 - Color Temperature: 5000K (cool white)
 - Color Rendering Index (CRI): > 80
 - Long LED life; L₇₀ > 60,000 hours¹
 - Rated for Ambient Temperatures up to 40°C/104°F
 - Power Factor (PF) > 0.9
 - Total Harmonic Distribution (THD) < 20%
 - Input Voltage: 120 – 277V; 50/60 Hz
 - Dimmable: 0-10Vdc
 - Distribution: Type III
 - Ultra-durable Powder Coat Paint
 - Standard Color Bronze
 - UL/cUL Listed
 - IP65
 - Warranty: 5 years
- ¹L₇₀ hours are IES TM-21-11 calculated hours.

Applications

- Security
- Outdoor Lighting
- Hotels
- Warehouses
- Parking Lots
- Street Lights
- Parks



Visit www.designlights.org
for the Qualified Products List

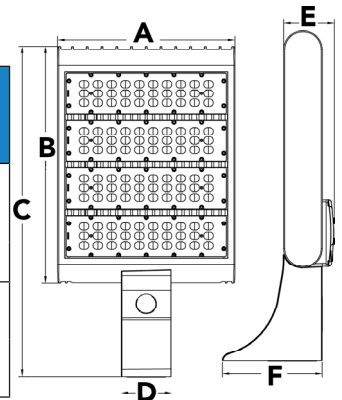


Options

- 6" long mounting arm pre-installed for square pole mounting
- Slip Fitter (XAL-SF), accessory, can be used to attach fixture to a 2 3/8" OD tenon.
- A round pole adapter (XAL-RPA), accessory, can be used to mount this fixture on round poles, up to 5" diameter.
- When ordered with option P, a shorting cap or twist-lock photo-control is required (sold separately [spec. sheet available here](#)).

Dimensions

Model	A	B	C	D	E	F	Effective Projected Area (sf)	Weight
XAL-5080	12 5/8	9 7/8	16 1/2	3 5/8	3 7/16	7 1/8	Top 1.24	12.8 lbs
XAL-5100							Side 0.50	
XAL-5150							Front 0.49	
XAL-5220	12 5/8	17	23 5/8	3 5/8	3 5/8	7 1/8	Top 1.99	25.0 lbs
XAL-5300							Side 0.66	
							Front 0.51	



All dimensions in inches

Ordering Information					
Model	CCT	Nominal Input Power	Voltage	Options	Accessories (order separately)
XAL LED Area Light	4 ² : 4000K 5: 5000K	080: 80W 100: 100W 150: 150W 220: 220W 300: 300W	LED-MV 120–277V 50/60 Hz LED-HV 480V ²	(blank): Mount Arm (MA) D ³ : Dimming motion sensor P ^{3,4} : 3-pin NEMA Photocontrol Receptacle S ³ : Standard motion sensor (on/off)	XAL-SF: Slip Fitter for up to 2 3/8" tenon XAL-TR: Trunnion XAL-RPA: Round Pole Adapter XFGS-S: Full Glare Shield (80W–150W) XFGS-L: Full Glare Shield (220W, 300W) XHGS-S: Half Glare Shield (80W–150W) XHGS-L: Half Glare Shield (220W, 300W) XWG-S: Wire Guard (80W–150W) XWG-L: Wire Guard (220W, 300W)

²150W and 300W only. Not available with sensor options.

³Non-stocked item, call for lead times.

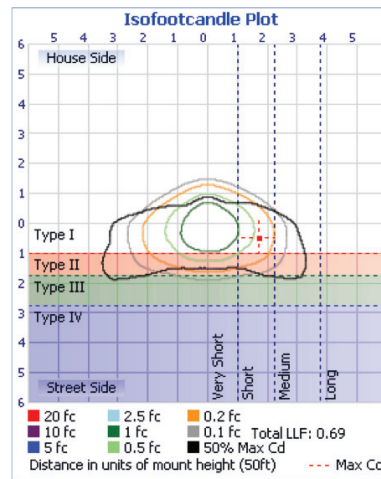
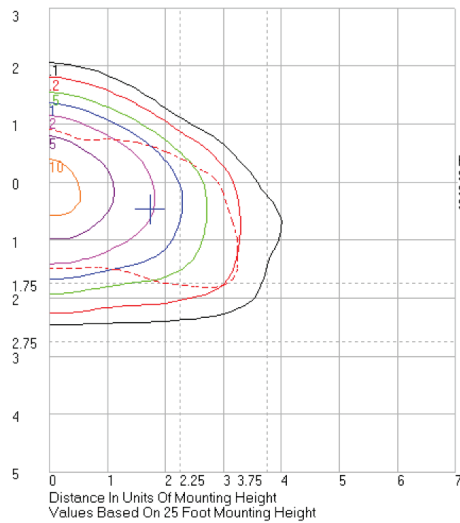
⁴Requires a shorting cap or a twist lock photocontrol (sold separately, [spec. sheet available here](#)).

LED Area Light
XAL Series

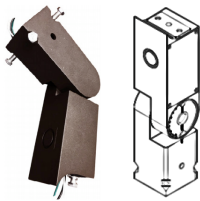
Project:	
Catalog#:	
Approved by:	

Performance Details

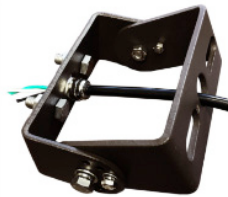
	Output Lumens		Input Power (W)	Efficacy (@5000K) LPW	Comparable to HID
	@4000K CCT	@5000K CCT			
XAL-*080 Series	9,692	9,601	78	123	200W
XAL-*100 Series	11,614	12,543	99	126	320W
XAL-*150 Series	17,981	18,408	157	117	400W
XAL-*220 Series	26,160	27,114	227	120	750W
XAL-*300 Series	36,090	36,953	306	121	1000W



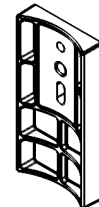
Accessories



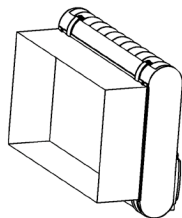
XFL/XAL-SF: Slip Fitter



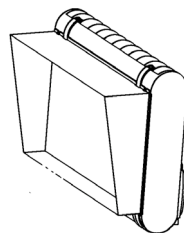
XAL-TR: Trunnion



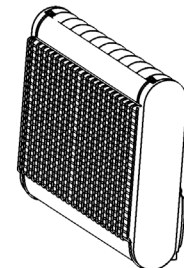
XAL-RPA: Round Pole Adapter



XFGS-S: Full Glare Shield (80W-150W)
XFGS-L: Full Glare Shield (220W, 300W)



XHGS-S: Half Glare Shield (80W-150W)
XHGS-L: Half Glare Shield (220W, 300W)



XWG-S: Wire Guard (80W-150W)
XWG-L: Wire Guard (220W, 300W)