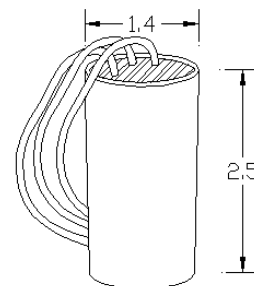
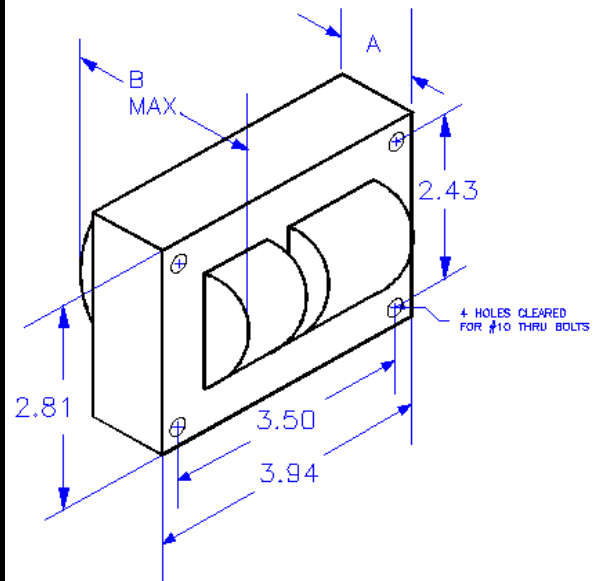
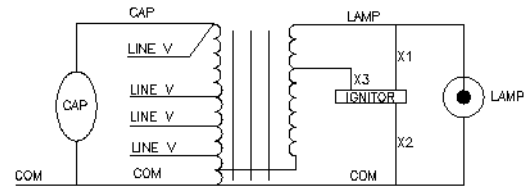


Input Volts		120	208	240	277
Circuit Type	HX-HPF				
Power Factor	0.95				
Regulation					
Line Volts	± 5 %				
Lamp Watts	Within Trapezoid				
Line Current (Amps)					
Operating		1.7	0.9	0.8	0.7
Open Circuit		2.9	1.6	1.4	1.3
Starting		1.9	1.0	0.9	0.8
Recommended Fuse		7	4	4	3
UL Temperature Ratings					
Insulation Class	H (180°C)				
Coil Temperature Code	C	C	C	C	C
Benchtop Coil Rise Primary	< 85	< 85	< 85	< 85	< 85
Benchtop Coil Rise Secondary	< 85	< 85	< 85	< 85	< 85
Input Watts		188	188	188	188
NOM Open Circuit Volts	120				
Current Crest Factor	1.52				
Input Voltage at Lamp Dropout		60	104	120	138
Min Ambient Starting Temp.	-40F -40°C				
High Potential Test (Volts)					
1 Minute	1650				
1 Second	2000				
Open Circuit Voltage Test (Volts)					
Open Circuit Voltage	110 - 130				
Input Current	min	2.25	1.20	1.10	1.00
	max	3.50	1.95	1.70	1.50
Short Circuit Current Test (Amps)					
Secondary Current	3.7 - 5.0				
Input Current	min	1.20	0.70	0.60	0.50
	max	2.50	1.20	1.10	1.00
Core and Coil Specifications					
Dimension A"	2.50				
Dimension B"	3.8				
Weight (lbs.)	8				
Lead Lengths (in)	12				
Capacitor Specifications					
Microfarads	14				
Volts (min.)	280				
	Oval OIL Filled DRY Film				
Case Size (in.)	1.25 1.5				
Height (in.)	2.87 3.72				
Temp Rating °C	90 100				
Starter Specifications					
Model Number	ST2001				
	BTL 10				
Temp Rating °C	105				

Wiring Diagram



Rev. Date: 9/15/2009

Test Ref.: Validation

Specifications subject to change without notice.

Howard Industries, Inc. Ballast Products Division P.O. Box 1590 Laurel, MS 39441
Phone: 1-800-956-3456 Fax: (601) 422-1652 www.howardlightingproducts.com